

# FAST CAM CNC OFFLINE SOFTWARE PACKAGE

## MUST HAVE FOR ALL CNC PROFILING



### FastCAM<sup>®</sup> SYSTEM

UNIQUE SOFTWARE FOR PROCESSED STEEL  
DRAW EDIT, NEST, COST & OUTPUT CNC



#### Best Fit for Metal Fabricators, Steel Service Centers and Structural Fabricators

**HIGHLIGHTS:**

- PURPOSE BUILT FOR METAL PROCESSING & PROFILING
- INTEGRATED 2D DRAWING SYSTEM AND POST PROCESSOR WITH FULL CAD COMPATIBILITY
- FAST & EASY LEARNING CURVE
- BEST VALUE—AVAILABLE IN 3 EDITIONS PLUS OPTIONAL BEVELING MODULE TO MEET YOUR BUSINESS NEEDS
- OPTIMIZED NC CODE WITH 40+ CONTROLLER COMBINATIONS
- MULTI-LANGUAGE SUPPORT
- MICROSOFT WINDOWS

**Features:**

- Input DXF, DWG, DSTV (NC1) & Vectored PDF files
- Output (Fast) CAM, DXF & NC Code
- Reverse engineer existing CNC files back to geometry-CAM/ DXF
- Secondary process support—Drilling, Marking, Beveling etc.
- CAD import cleans & compresses files ready for quality cutting
- DXF layer support for different processes
- Multi-torch & high-def plasma support

**CNC PROGRAMMING MADE FAST & EASY**

The FastCAM<sup>®</sup> System has been designed to draw, nest and cut metal as simply and efficiently as possible. Ease of use is as important as the high levels of materials utilization and optimization the software provides.

Draw, Path, Nest and produce NC code from the one system. Or use with your existing CAD system for independent post processing and nesting.

Easy Editing & Verification of geometry combined with one step nesting makes the system instantly productive.

**SUPPORT FOR POPULAR CUTTING EQUIPMENT**

FastCAM<sup>®</sup> supports all combinations of machines and controller as well as ESSI, EIA and ISO NC languages in both inch and metric.

NC output can be Absolute or Incremental.

FastCAM<sup>®</sup> simulates machine operation with CNC on screen

FastCAM<sup>®</sup> is used successfully in Service Centers, Shipbuilding, Mining, Steel Fabrication, Metal Fabrication & Sign Cutting.

FastCAM<sup>®</sup> delivers vast improvements in computation and processing capabilities but maintains its core strengths:

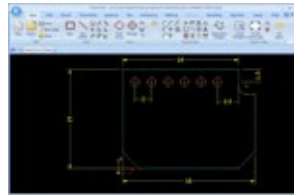
- Easy to Learn
- Simple to Use
- High Performance
- Mature Technology
- Low Cost



Support for multi-pass beveling with 3D verification. Single or Multi-torch, oxy and plasma cutting, Hi-def Plasma, Laser, Water-Jet plus Oxy and Plasma



**COMPUTERIZED CUTTING NEEDS PRECISE, CLEAN GEOMETRY. UNLIKE CAD, FASTCAM'S DRAWING EDITOR IS DESIGNED FOR THE JOB**



FastPLOT<sup>™</sup> NC Code Editor shows individual processes by color and line type. Interactive editor shows every move in CNC code.

Graphic Verification of your NC program before you CUT!

FastCAM<sup>®</sup> is a system built specifically for the high speed production of line drawings. CNC needs every line, arc or entity to be precise, clean connected geometry.

By comparison, CAD was designed to put lines on paper. However today's fabricators are increasingly

supplied job data in a variety of file formats. To solve this problem, FastCAM<sup>®</sup> will not only load a range of file types, it includes a clever suite of CAD Smart Tools to fix common problems.

Load and fix DXF, DWG, DSTV files. Run CAD Clean and CAD Compress to output optimal CNC for cutting, drilling, marking & beveling

**FASTPLOT<sup>™</sup> VERIFY CNC & COST JOBS BEFORE CUTTING**

- FastPLOT<sup>™</sup> Code editor
- Realtime Pan & Zoom
- Plot every code movement
- Find and code block directly in CNC program

FastPLOT<sup>™</sup> is included in the system to enable users verify or even edit and write NC code with full graphic simulation.

for each process and distances as well as net and gross material utilization making it ideal to price individual parts or entire nests.

FastPLOT<sup>™</sup> will read and convert existing NC code to DXF or CAM formats. Directly Edit NC code to fine tune programs prior to production.

**PROGRAM 50% FASTER WITH INTELLIGENT AUTOMATIC PATHING**

FastPATH<sup>™</sup> will completely analyze a nest and determine which contours are parts and which are holes, no matter how deeply nested.

Entries and exits are added and the software then optimizes the process sequence. Path single or nested parts, including Direc-

tion, Kerf, Entries/Exits, Sequencing, Batch Processing, Hole Avoidance & Tabs.

Add Pre-Piercing for substantial time and consumable savings especially on heavy plate nests.

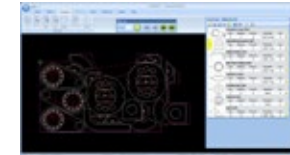


**FASTNEST MANUAL & FULLY AUTOMATIC NESTING**

FastCAM<sup>®</sup> Standard & Professional Editions include the FastNEST<sup>™</sup> nesting module to optimize both the material usage and the sequence of cutting. Parts can be nested automatically or manually placed for maximum productivity.

Nest a variety of file formats with support for all secondary processes like marking, Multiple primary process are also supported including mixed Oxy-fuel, Plasma, Drilling & multi-pass bevel

- Fast 'One click' nesting
- TRUE SHAPE
- Simple & Complex Nests
- Auto Nesting 'Pause'
- Single and auto pair arrays for same parts
- Bulk part input
- Multi Torch, Multi Process.
- Multi plate or Remnants
- Auto Placement of parts



- Group select and move parts to preset distance.
- Auto plate trim
- 'Jostle' to pack nests
- Post nest optimization inc. Bridging, Tabbing & Stitch Cutting
- Hole avoidance and rapid travel minimization
- Dynamic part rotation
- Move pierce points & entry angle with simple point & click
- Auto-array, columns, rows, offset or 'in a box'

**CHOOSE FROM 3 EDITIONS TO SUIT YOUR BUSINESS NEEDS**

**FastCAM<sup>®</sup> Standard**  
Drawing with True Shape Semi Automatic Nesting, Single Plate. Feature-rich but manual. Includes FastCAM<sup>®</sup> Drawing Editor, FastPLOT<sup>™</sup> & FastNEST<sup>™</sup>. Interactive plus smart CAD tools. Suited to non-critical or non-demanding production levels. E.g. Repetition cutters, low duty cycle.

**FastCAM<sup>®</sup> Professional**  
Full Shape, Full Auto Nesting, Multi Plate & Remnant plate, Multi input, Multi output. Automatic everything. Ability to move pierce function before and after nesting. Optional Beveling Module. Multi-pass single and double vee with land. Add full bevel details to any part and auto nest.

**FastCAM<sup>®</sup> Professional + Bevel**  
FastCAM<sup>®</sup> Professional with the additional bevel module. Multi-pass single and double vee with land. Add full bevel details to any part and auto nest.



**INCLUDES SERVICE MAINTENANCE & TECHNICAL SUPPORT PLUS OPTIONAL WEB TRAINING**

- The FastCAM<sup>®</sup> is an annually renewable subscription license
- The subscription includes comprehensive FastCAM<sup>®</sup> Service & Technical Support:
- Unlimited telephone technical support
- 24/7 FastCAM<sup>®</sup> eLearning website

- Remote web support
  - All service pack updates as they become available.
- See our web site for current pricing.



FastCAM has been supplying PC-based software for Burning, Shearing and Sawing/Drilling machines for over 25 years. The flagship product FastCAM<sup>®</sup> offers unique integrated postprocessors, NC verification and NC code nesting that still sets it apart from other CAM and CAD/CAM systems. The new generation of FastCAM<sup>®</sup> software is used in many countries, in many languages and in many different environments.

Today the product line has been expanded to include dozens of trademarked products offering a wide range of solutions for glass, timber and metal fabrication. FastCAM has OEM and Business Partners in North America, South America, China, Australia, New Zealand and Europe (Poland, UK, Czech, Hungary). We welcome all enquiries.

**FASTCAM WORLDWIDE OFFICES**

**FastCAM Inc. — USA**  
Cumberland Metro Office Park  
8519 N. Cumberland  
1008 Chicago, IL 60656

Ph: 312 715 1535  
Fax: 312 715 1538  
fastcam@fastcam.com  
www.fastcam.com

**FastCAM Pty. Ltd. — Aela Pacific**  
95 Canterbury Road,  
Middle Park, Victoria, 3206,  
Australia

Phone: 61 3 9699 9999  
Fax: 61 3 9699 7501  
fastcam@fastcam.com.au  
www.fastcam.com.au

**FastCAM — China**  
No.5, Building 19/498  
Guohejiong Rd  
Pudong Software Park, Shanghai  
201203, China

Phone: 8621 5080 3069  
Fax: 8621 5080 3071  
fastcam@fastcam.cn  
www.fastcam.cn

**Other Products by FastCAM:**

The following are separate programs that can be added to any package or standalone.

**FastCAM<sup>®</sup> Bevel** — Precise Weld Preparation.

**FastCUTO** for Shears & Saws — Rectangular Linear and Cut to Length optimization for guillotines.

**FastCAM<sup>®</sup> QE** — Quotation system with optimization for steel profiles and long products. Complete system for Steel Service Centers.

**FastCAM<sup>®</sup> MTO** — Capture steel take off data electronically.

**FastSHAPES<sup>®</sup>** — Development of blowpipes/transitions for all the different segments in the heavy engineering market.

**Tradesman in a Box<sup>™</sup>** — Complete plate development system for hand lofting (without CNC machinery).

**FastFRAME<sup>®</sup> and FastPIPE<sup>™</sup>** — Tubular and Pipe Development programs for heavy steel.

**FastBEAM<sup>™</sup>** — Program beam lines directly from shop drawings. CNC, DSTV NC 1 output

**FastCOP<sup>™</sup>** — Digitize engineering parts and templates to DXF format.

**FastLINK<sup>™</sup>** — Speed DNC download from PC to cutting machine.

**FontGEN** — Convert fonts to DXF.

**Outline** — Convert images to DXF.

**FastTRACK<sup>™</sup>** — Remnant Tracking database for Stock & Remnants



FastCAM, FastPLOT, FastPATH, FastNEST, FastSHAPES, FastTRACK, FastCAM QE, FastCAM MTO, FastFRAME, FastBEAM, FastCOP, FastCUT, FastPIPE, Tradesman in a Box & FastLINK are trademarks or registered trademarks of Fujian Microprocessor Systems Pty. Ltd. Other trademarks belong to their respective companies. © 2008-2016. All rights reserved worldwide. FCAM001-18

www.fastcam.com



**ASSET PLANT & MACHINERY PTY LTD**  
8 Capital Drive, Dandenong VIC 3175

Tel : (03) 8710-8088  
Fax : (03) 8710-8044

Web : www.assetplant.com.au  
Email : sales@assetplant.com.au